

### Products

#### gamma 333 PC - No other machine has more wire processing value

Ultra short conversion times, additional applications and a user-friendly user interface with multiple-language capability. The new komax gamma 333 PC makes it all possible!

With its third processing station and state of the art control software, you are assured maximum flexibility and an even more efficient way of meeting your wire processing needs. What's more, the system is a superb value for the money.

#### Maximum flexibility

With its additional processing station on side 1, the gamma 333 PC now enables you to crimp both ends of the wire, to create double crimp connections with three different contacts, to carry out one-ended seal application, tinning or ink-jet marking. In addition, process monitoring is all integrated to ensure that the wire is cut to length and stripped perfectly to specification and that quality control is optimized.

#### Special feature

Guide tubes can be changed without tools thanks to the quick-release system. The contact rolls are positioned in the lower part of the machine and the safety cover opens upwards to ensure optimum access to the tools. Thanks to the fully programmable CNC axes plus the stored wire and processing parameters, production is always economical, even with small batches.

#### Integrated device

Wire processing today requires cost-optimized, comprehensive solutions. To this end, the mci 711 and mci 761 peripheral stations have been specially adapted for use with these new machine generations. You benefit from the compact design and standardized operating concept. Thanks to serial control, the peripheral devices with integrated process monitoring are also integrated into the TopWin user software.

#### Here is how you benefit

- Exact reproducible settings for processing stations
- Optimum accessibility to the processing stations and contact rolls
- Drawer for storing the guide parts
- Maintenance-free step and servo motor of top quality
- Encoder measurement system with ACS anti-slip monitoring
- Frequency and voltage independent mci 711 crimp module and mci 761 seal module
- High piece output
- Compact wire gripper with high level of holding force
- V blade principle, optional form blades
- Ink jet marking integrated into the user interface

#### Your benefits

- Ultra short conversion times thanks to integrated processing modules
- Highly comfortable and convenient to operate thanks to graphic-based TopWin software
- User specified language — more than ten different languages to choose from
- Crimp force analyser with statistic analysis
- Seal monitoring
- Integrated good/bad sorting
- Can be networked with additional WPCS software
- Freely definable access rights to ensure excellent productivity and quality

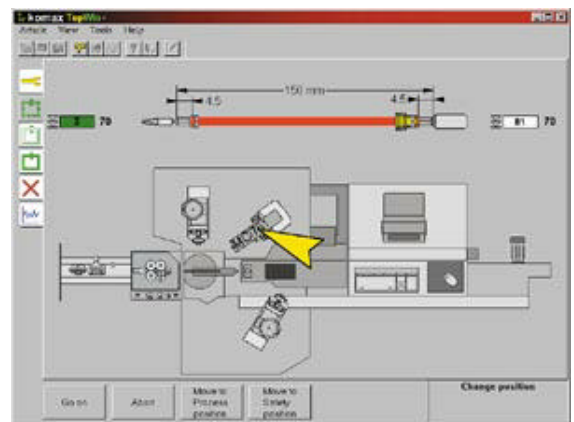
#### TopWin



The komax gamma 333 PC with two mci 711 crimp modules and the mci 761 seal application module



The mci 711 crimp module and the mci 761 seal application module






TopWin user interface

The Windows user interface is designed for quick, simple data input. Thanks to the excellent graphics-based layout, users are able to master all machine operations in record time.

### Accessories

Through the addition of various accessories, the komax gamma 333 PC can be customized to meet your exact needs yet remains adaptable to accommodate future requirements.





#### Accessories for crimp module

-  Height adjustable module elevating table
-  Contact feed units with paper strip take-up
-  Contact strip cutter

#### Wire deposition

-  Feed belt and extension to deposition system (2m or 4m) for long wires

#### Process monitoring

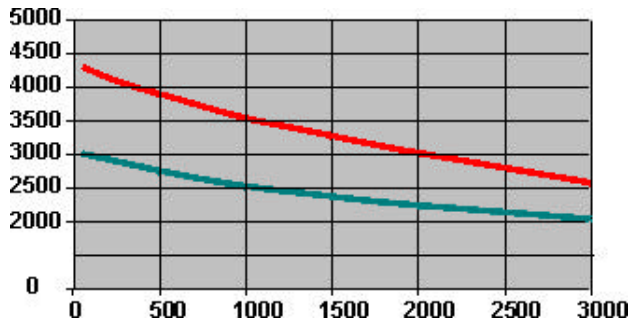
-  Crimp force monitoring
-  Seal monitoring
-  Splice monitoring
-  Detection system for wire end and knots

### Technical data

<b>Wire cross sections:</b>	0,125mm <sup>2</sup> – 5mm <sup>2</sup> AWG 26 – AWG 10
<b>Length range:</b>	60mm – 10000mm (+/- 1mm bzw. < 0,2% depending on wire length)
<b>Stripping lengths:</b>	Side1: 0–15mm (optional 30mm) Side2: 0–15mm
<b>Wire feed rate:</b>	max. 6m/s
<b>Noise generated:</b>	< 75dB (without crimp modules)
<b>Electrical connection:</b>	3x208 – 480 V / 50 – 60Hz 6kVA
<b>Pneumatic connection:</b>	5–6 bar
<b>Air consumption:</b>	6,5 m <sup>3</sup> /h
<b>Weight:</b>	840 kg with two crimp modules
<b>Dimensions (W&amp;loz;D):</b>	3137 x 1377mm Height with cover closed: 1790mm (70.5 in.) Height with cover open: 2670mm (105.1 in.)

# Reference values for piece output on gamma 333 PC

Pieces/h



Wire length (mm)



## Wire data

- Wires FLK-R 0,75 mm<sup>2</sup>
- Pneumatic pressure 6 bar
- Speed 6 m/s
- Acceleration 40 m/s<sup>2</sup>
- mci711 crimp modules
- Quality control OFF